

The Decvrion's Waltz

2008 WARA State Championships, 14th/15th June 2008



SCALE 1:50,000, 5 metre contour interval
0 1km 2km 3km

LEGEND

- Building
- Continuations
- Control
- Contours
- Dam
- Fence
- Hash House
- Magnetic North Line
- Out of Bounds
- Road, Sealed
- Road, Major Gravel
- Track
- Watercourse
- Swamp
- Water Drops



Western Australian Rogaining Association Inc.
<http://wa.rogaine.asn.au>



Department of Sport and Recreation

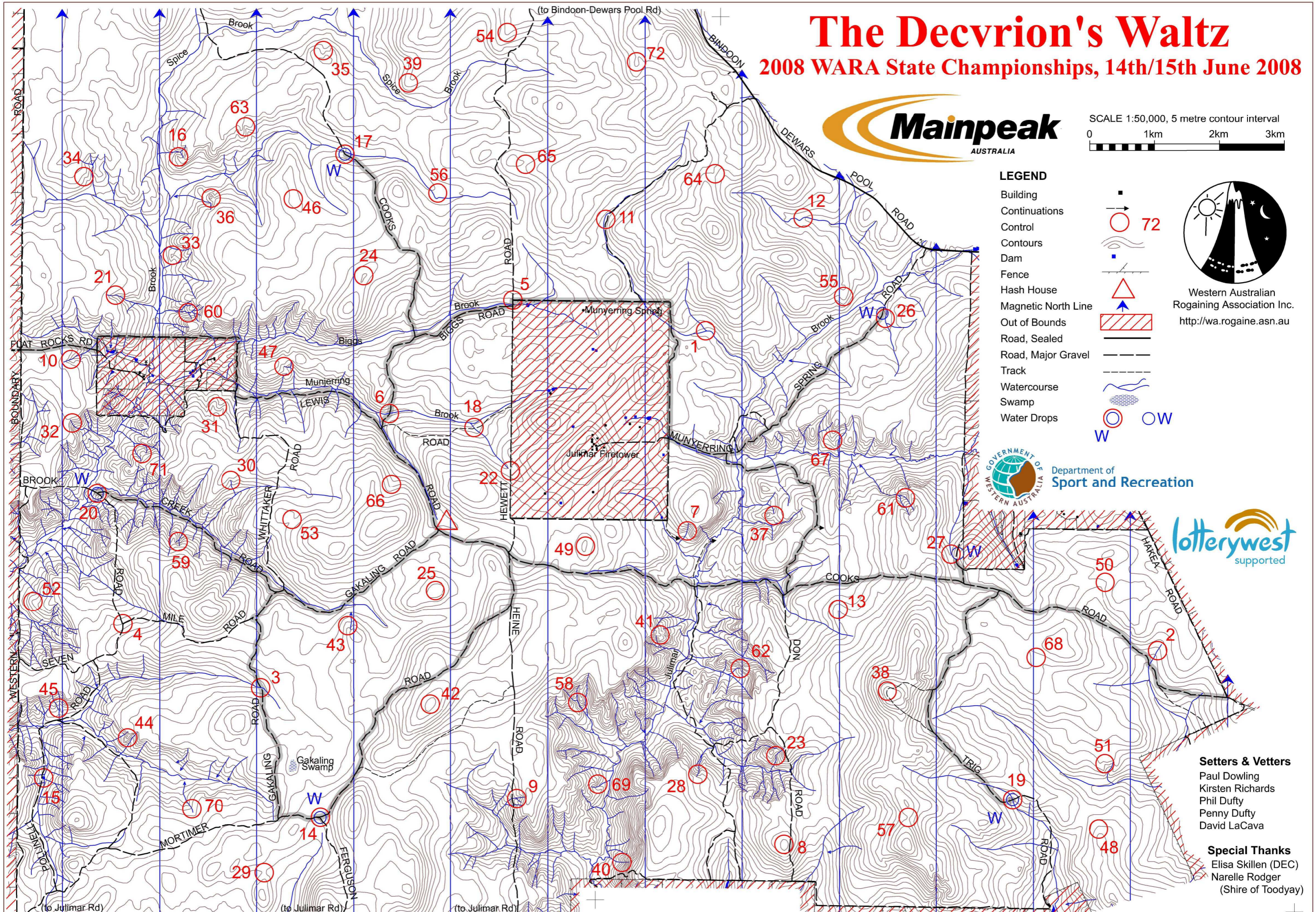


Setters & Veters

Paul Dowling
Kirsten Richards
Phil Dufty
Penny Dufty
David LaCava

Special Thanks

Elisa Skillen (DEC)
Narelle Rodger
(Shire of Toodyay)



The Decvrion's Waltz Rogaine. WARA Winter 24 Hour Rogaine, 14th & 15th June 2008

No.	Description	Points	No.	Description	Points	Important Information
1	The indistinct watercourse junction	10	37	The saddle	60	Control Cards From 1130 Saturday
2	The gully	10	38	The track bend	60	
3	The track/watercourse junction	10	39	The spur	60	
4	The track junction	10	40	The watercourse	60	Briefing 1145 Saturday
5	The fence corner	10	41	The rocky spur	60	
6	The track/watercourse junction	10	42	The broad summit	60	
			43	The spur	60	Start 1200 Saturday
7	A track/watercourse crossing	20	44	The spur	60	
8	The broad summit	20	45	A spur, between the watercourses	60	
9	The watercourse junction	20	46	North end of a broad summit, the leaning tower of Tree-sa	60	Finish 1200 Sunday
10	The gully	20	47	The head of the western watercourse	60	
11	Between the track and the watercourse	20	48	The spur, on the NW edge of a large thicket	60	
12	The watercourse, on the NW edge of a large clearing	20				Hash House Opens at 1600 Sat Closes by 1300 Sun
13	The spur	30	49	The broad knoll	70	
14	The track junction, on an island (WATER)	30	50	The broad gully	70	
15	East end of the dam wall, then 10m @ 45°	30	51	The gully	70	Sunset 1719
16	The rocky spur	30	52	The spur, on a small rocky knoll	70	
17	The track bend (WATER)	30	53	The broad saddle, in a rough clearing 30m dia.	70	
18	The track, in the gully	30	54	The spur	70	Moonrise 1401
			55	The broad spur	80	
19	The track/watercourse junction (WATER)	40	56	The gully	80	
20	The track junction (WATER)	40	57	The saddle	80	Sunrise 0712
21	The watercourse bend	40	58	The track/watercourse junction	80	
22	The track/gully junction	40	59	The gully, on a rocky spur	80	
23	The watercourse bend	40	60	The watercourse junction	80	Moonset 0305
24	The broad knoll	40				
			61	A watercourse junction	90	
25	The broad knoll	50	62	The watercourse, head of	90	Late Penalty 10 points per minute or part minute. LATE (no points) later than 1230 Sunday
26	The watercourse bend (WATER on Munyerring Spring Rd)	50	63	The gully	90	
27	The watercourse, head of (WATER on the track)	50	64	The saddle	90	
28	A watercourse junction, on the eastern watercourse	50	65	The broad saddle	90	Controls Used 72
29	The saddle, on a very indistinct track	50	66	The gully	90	
30	Head of the watercourse	50				
31	SW part of gully, head of a minor watercourse	50	67	The spur, below a group of boulders	100	Total Points 3960
32	A watercourse junction	50	68	The gully	100	
33	A rocky knoll	50	69	A 40x20 rock surface, South end	100	
34	Head of the gully	50	70	The watercourse bend	100	
35	The gully	50	71	The spur	100	
36	The knoll	50	72	The spur	100	
Water Drops: At Controls 14, 17, 19, 20, 26*, 27* (* - Water on track near control.) If you are injured please make your way to a water drop or a patrolled road and wait there for help.			Patrolled Roads. See roads indicated on the map: Mortimer, Gakaling, Creek, Cooks, Lewis, Biggs, Munyerring Spring and Trig			

See back of sheet for further terrain information.